

## CRAFT IDEAS

### MAKING FLUFFY SLIME

#### Fluffy Slime Ingredients

If you want a large batch – triple the below recipe. Or make 3 batches with 3 different colors like we did and turn your slime into **Unicorn Fluffy Slime!**

#### Per batch:

– **2/3 cup of Elmer's White Glue** – we like to buy [this gallon size](#) of white glue as it's a lot cheaper and you can continue to use it to make more batches.

Note: we made this with Elmer's white glue. Do not substitute with other glue as the make-up may not be the same and the recipe may not work

– **1/2 teaspoon Baking Soda**

– **1/4 Cup Water**

– **2-3 cups Shaving Cream** – note: do not use shave gel.

– **1.5 Tablespoons Contact Lens Solution** – **\*Important:** your brand of contact lens solution must have boric acid and sodium borate in the ingredient list. This is what interacts with the glue to form the slime. We recommend only using [Renu fresh](#) or [Equate brand](#). Do not substitute with other brands.

**SEE:** [How to Make Slime With Contact Solution](#) for more tips making slime with contact lens solution.

– **Liquid Food Coloring** – [this set](#) comes with all kinds of vibrant pinks, purples and blues.

**Safety Tips:** Adults only should make the slime and handle all chemicals. Do not substitute any ingredients in our slime recipes. If you have sensitive skin, wear gloves while playing with the slime. Always wash hands before and after use. If you notice any skin irritation discontinue use immediately. Slime is a science experiment and should be made and played with in moderation. See the bottom of the post for more safety precautions before making the slime.

#### INSTRUCTIONS:

1. Add your white glue to a bowl.



2. Add you water and baking soda and then mix.



3. Add your shaving cream and mix.



4. Add your food coloring until you are satisfied with the color. Mix.



5. Now slowly add in your contact solution.

**\*\*Important:** your brand of contact lens solution must have boric acid and sodium borate in the ingredient list. This is what interacts with the glue to form the slime. **If slime does not form** it is typically due to the contact lens solution not having these ingredients. Check your label and see the recommended brands above in our ingredient list.

We like to add in 1 tablespoon, knead for 5 minutes and then add in the 1/2 tablespoon after kneading for some time. The slime will be very sticky when you're kneading – and that's normal!



The first tablespoon you add will let you start to knead it. And the last 1/2 tablespoon will bring the stickiness down and it shouldn't be sticking as much to your hands.

**Note-** fluffy slime is MESSY when you're making it. It is normal that it will stick to your hands as you're kneading. If you find it still too sticky – add some baby oil or lotion to your hands. You can also add more contact solution if it's still too sticky, just a little bit at a time. If you add too much contact solution the slime may become too hard and won't be as stretchy to play with.

Now repeat the above recipe for each color you'd like to make. Note: Once you mix the colors together they will eventually mix into one color like play dough does. So you can keep them separately or mix and see what happens! If you make all 3 colors it may turn to gray so if you want to end up with purple just mix the pink and purple together.



# HOW TO MAKE SLIME

## INGREDIENTS

- 2 (4-ounce) bottles washable school glue, such as Elmer's (see note for variations)
- 1 to 2 drops liquid food coloring (optional)
- 1/4 cup glitter (optional)
- 1 teaspoon baking soda
- 2 to 3 tablespoons saline solution (i.e., contact lens solution), divided

## STEPS

1. **Color the glue (optional):** Pour the glue into a medium bowl. Stir in the food coloring and glitter, if desired. This mixture doesn't need to be homogeneous, as you'll mix it even more after adding the baking soda.
2. **Add the baking soda:** Add the baking soda to the glue mixture and stir until smooth.
3. **Add the contact lens solution:** Pour in 2 tablespoons of the contact lens solution and stir slowly. The mixture should begin to harden, becoming stringy.
4. **Mix until a ball forms:** Continue mixing slowly until a ball of slime forms.
5. **Knead by hand:** Pick up the slime and work between your two hands, until smooth. If the slime is particularly slimy, work in another 1/2 tablespoon of contact lens solution as needed.
6. **PLAYING WITH SLIME!** Once mixed, you can play with the slime immediately or store for future play.
  - **Hidden Figures:** Fold small figures or cars into the slime and ask your children to find them.
  - **Polka-Dot Slime:** Fold 10 to 15 soft pom-poms into clear slime (no coloring, no glitter)
  - **Cut-and-Measure Slime:** Provide your kids with a metal or plastic ruler and kid-safe scissors. See who can stretch their slime the furthest. Or practice counting and cut the slime into 10-inch pieces.



# STRING ART CREATIONS

Materials:

- A piece of wood cut to the size you want; you can stain or paint it if you wish
- Computer
- Printer
- Scissors
- Tape
- Linoleum nails (how many you need depends on the size of your project; one pack was enough for this project)
- Hammer
- Embroidery floss in colors of your choosing

First, you'll need to locate an image to use as your pattern for the string art. You can either search the internet for simple shapes—like a house, for instance—or check around your home for illustrations to use as a pattern. Print out or photocopy the image and cut out its silhouette.

**Tip:** Look for images and patterns that have fairly simple and straightforward outlines.

## Outline the Shape With Nails

Next, position the pattern on the piece of wood and use tape to secure it temporarily.

With a hammer, lightly pound linoleum nails all the way around the paper pattern. Try to space them as evenly as possible and nail them to the same depth.

**Tip:** To prevent your fingers from getting hit with the hammer, pinch each nail in a clothespin and hold *that* instead of the nail itself.



## Outline the Shape With String

When the shape has been outlined completely with nails, remove the paper pattern. Using [embroidery floss](#), outline the perimeter of the shape. Begin by tying the floss to the first nail, and leave a tail for tying off when you are finished.

**Tip:** Use all six threads of the embroidery floss. Using fewer will cause the strings to break when you pull it taut against the nails.



## Changing Directions at a Corner

When you reach a corner or need to change the direction of the string, wrap the string tightly around that nail. This will keep things tight and help maintain the integrity of the shape.



## Fill in the Shape With String

Once you have outlined the shape with string, begin filling it in by crisscrossing and wrapping from nail to nail. There is no rhyme or reason to this process. Simply go from side to side; top to bottom and corner to corner, varying the lengths and order randomly. If you see that you're about to run out of string, try to end where you left a tail of string at the beginning. Knot the ends tightly and start another bundle of floss there as well. Repeat this process until the shape is filled into your liking, then tie off the end when finished. Clip the tails of thread. Now that you've finished, you can display your creation wherever you want in your home!



# Emoji Craft

## Materials:

- Paper plates
- Large paddle pop sticks
- Yellow and black paint
- Paint brushes
- Coloured paper
- Scissors
- Sharpie

## Instructions:

1. Laying out a couple pieces of old newspapers or scrap paper before you get started.
2. Paint each paper plate yellow with a foam paintbrush and let dry (use a hair dryer for a faster dry time).
3. Paint each craft stick black and let dry.
4. Decide which emoji's you'd like to make (You can look them up on your computer for a picture reference).
5. Draw your face shapes with a sharpie onto your coloured card stock and cut them out with scissors: for example if you're making the heart eyed smiley face emoji, draw and cut out two red hearts for eyes and a black half oval for the mouth and glue them onto the front of a yellow plate.
6. Carefully hot glue the black wavy craft stick to the back of the plate (emoji face) and let dry.



## Peg & Paddle Pop Stick Aeroplane Craft

### Materials:

- Wooden Clothes Pegs
- Popsicle stick
- Button
- Paint
- Glue Gun

### Instructions:

1. Carefully remove the metal spring from the clothes peg
2. Paint each clothes peg and let them dry
3. Once the paint is dry, place the spring back into the peg
4. Glue 2 popsicle sticks on the top and bottom of the peg to make the plane's wings. Then glue one on the back of the peg as the plane's tail.
3. Glue half a paddle pop stick onto the front of the plane only on the top part of the peg.
4. Decorate your plane with white paint to add those finishing touches





# PAPER WINDMILLS

## Materials

- Crayons or Markers
- Pencil
- [Push Pin](#)

## Tools

- [Scissors](#)

### **Step #1:**

Take your piece of paper and cut it into a perfect square.

An easy way to do this is fold the paper into a triangle, taking one corner and lining it up to the other side. This will leave excess on one side that, once cut, gives you a square!



### **Step #2:**

Decorate both sides of the paper with whatever design you wish.

You can create a summer scene or just a fun design - like the colorful hearts we've created.



### **Step #3:**

Fold the paper diagonally so it turns into a triangle and crease it lightly.

Repeat this for the opposite direction as well. You will then unfold and have a creased "X" on the page.



### **Step #4:**

Cut along the creases about halfway to the middle of the paper. Be sure not to cut all the way.



**Step #5:**

Bend each corner into the middle. Make sure to bend and not fold.



**Step #6**

Once all 4 corners are in the middle push the push pin through them all as well as the straw or eraser. Be careful not to hurt yourself with the pin!



## COLOURED SALT JARS

*Supplies needed:*

- Regular table salt
- Colored chalk
- Glass jars (available from Michaels)
- Paper

*Directions:*

1. First, pour about a tablespoon of salt onto the middle of a piece of paper. Then, as shown, rub the salt with the side of a piece of chalk. You will see the salt start to change color. Keep rubbing the chalk in the salt, and stirring the salt around, until you have reached your desired color.



2. Using your paper as a funnel, carefully pour the salt into your jar.



3. Repeat this process, using different colors of chalk, until your jar is full. Use care not to shake up your jar — if the colors mix, your beautiful rainbow of colors will turn muddy looking.



## WATERCOLOR CIRCLE ART

### You will need:

- Paper
- Watercolors, brush and water
- Large roll of tape or anything round
- Permanent marker

Although we have been using canvas for our art projects, I think this particular one would also work well on heavy duty paper.

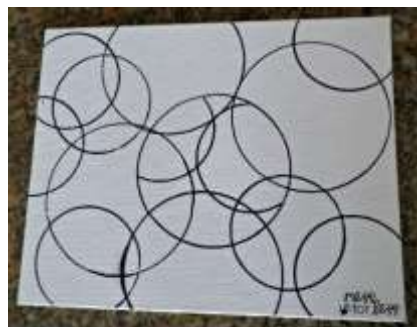
Depending on the age of the child doing this art project, some of the steps will need to be done by an adult. I got a large roll of tape and used it to trace circles on a canvas using a permanent marker.

You can make different sized circles by tracing either the outside or inside of the roll of tape.

To add interest, overlap the circles. You can make as many or few as you'd like in this circle art project. I noticed that as I added more and more circles, it created new shapes and slivers on the canvas. It really was addictive!

We started out painting the small slivers first. plan to not have the same color next to each other for a brighter effect. Some tips for using watercolor on canvas:

- Don't water them down too much. Add just the smallest amount of water to your watercolors and mix until you get color. If the watercolors are too thin and runny the paint will not adhere to the canvas.
- If your child does add a lot of water to the watercolors, and paints on the canvas, you can always blot it with a paper towel and the color will still show.



## DIY PET ROCK

### Supplies needed:

- Rock – go outdoors and collect rocks
- Paint
- Wobbly eye's
- Craft Glue
- Wool
- Scissors
- Paintbrush

### How to make it:

- Wash rock with soap and water, allow to dry. This will enable the paint to bond with the rock.
- Paint rock desired colour and add patterns if you like.
- Glue on wobbly eyes
- Paint on a nose and mouth
- Gather some wool for the hair and glue onto top of rock.
- Allow to dry before playing with.



# Paper Plate Jellyfish

## Materials:

- Paper plates
- Tissue paper
- Scissors
- Glue
- Hole Punch
- Wool
- Googly eyes
- Black marker

## Instructions:

1. Start by cutting up the tissue paper into small squares.
2. Draw a wavy line at the bottom of the paper plate and cut along that line.
3. Glue the tissue paper squares onto the paper plate.
4. Use a hole punch to make several holes along the wavy bottom line of the paper plate.
5. Cut yarn strands of the same length. Thread the yarn through the holes at the bottom of the paper plate and tie them up.
6. Glue the googly eyes onto the paper plate and use a black marker to draw a mouth.

